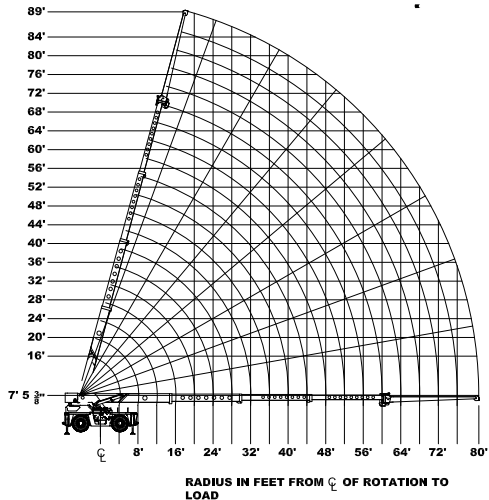
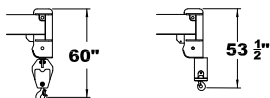


# Load Chart US Standard



## FOURTH STAGE TIP

USE FOUR  
PART LINE  
FOR LOADS  
TO 40,000 LBS.



SHEAVE BLOCK  
& HOOK: 400 LBS.

| CAPACITIES APPLY TO OPERATION ON FIRM LEVEL SURFACE |   |                                   |                          |                         |            |              |       |      |
|---|---|-----------------------------------|--------------------------|-------------------------|------------|--------------|-------|------|
| LOAD<br>RADIUS<br>FEET                              | MAIN BOOM OR EXTENSION CAPACITIES IN POUNDS |                                   |                          |                         |            |              |       |      |
|   | 360° ROTATION                               |                                   |                          |                         | OVER FRONT |              |       |      |
|   | ON RUBBER                                   | OUTRIGGERS<br>OUT & DOWN          | OUTRIGGERS<br>MID & DOWN | OUTRIGGERS<br>IN & DOWN | ON RUBBER  | ON OUTRIGGER |       |      |
| MAIN BOOM   | 6   | 16000                             | 40000                    | 40000                   | 40000      | 16000        | 40000 |      |
|   | 8   | 16000                             | 34000                    | 34000                   | 34000      | 16000        | 34000 |      |
|   | 10  | 10300                             | 30000                    | 30000                   | 21200      | 16000        | 30000 |      |
|   | 12  | 6800                              | 28000                    | 28000                   | 16600      | 16000        | 28000 |      |
|   | 14  | 6200                              | 24000                    | 20000                   | 12000      | 15300        | 24000 |      |
|   | 16  | 4500                              | 21000                    | 15700                   | 9400       | 11600        | 21000 |      |
|   | 18  | 3500                              | 18900                    | 14700                   | 7700       | 9300         | 18900 |      |
|   | 20  | 3100                              | 17000                    | 11300                   | 6400       | 7800         | 17000 |      |
|   | 22  | 2300                              | 15100                    | 9900                    | 5400       | 6800         | 14900 |      |
|   | 24  | 1800                              | 13100                    | 8000                    | 4600       | 5900         | 13100 |      |
|   | 26  | 1500                              | 11800                    | 7300                    | 4000       | 5200         | 11900 |      |
|   | 28  | 1000                              | 10400                    | 6500                    | 3300       | 4600         | 10300 |      |
|   | 30  | ---                               | 9400                     | 5700                    | 2900       | 4000         | 9400  |      |
|   | 32  | ---                               | 8500                     | 5100                    | 2500       | 3600         | 8400  |      |
|   | 34  | ---                               | 7700                     | 4500                    | 2200       | 3200         | 7400  |      |
|   | 36  | ---                               | 6900                     | 4000                    | 1900       | 2800         | 6900  |      |
|   | 38  | ---                               | 6300                     | 3700                    | 1700       | 2500         | 6300  |      |
|   | 40  | ---                               | 5700                     | 3200                    | 1400       | 2200         | 5700  |      |
|   | 42  | ---                               | 5200                     | 3000                    | 1100       | 2000         | 5200  |      |
|   | 44  | ---                               | 4800                     | 2700                    | 900        | 1800         | 4800  |      |
|   | 46  | ---                               | 4400                     | 2400                    | ---        | 1600         | 4400  |      |
|   | 48  | ---                               | 4000                     | 2200                    | ---        | 1400         | 4100  |      |
|   | 50  | ---                               | 3700                     | 2000                    | ---        | 1200         | 3700  |      |
|   | 52  | ---                               | 3400                     | 1800                    | ---        | 1100         | 3500  |      |
|   | 54  | ---                               | 3200                     | 1500                    | ---        | 900          | 3200  |      |
|   | 56  | ---                               | 2900                     | 1400                    | ---        | ----         | 3000  |      |
|   | 58  | ---                               | 2700                     | 1200                    | ---        | ----         | 2700  |      |
|   | BOOM EXTENSION                              | 60                                | ----                     | 2500                    | 1100       | ----         | ----  | 2150 |
|   |   | 64                                | ----                     | 2100                    | ----       | ----         | ----  | 1800 |
| 68  |   | ----                              | 1800                     | ----                    | ----       | ----         | 1500  |      |
| 72  |   | ----                              | 1400                     | ----                    | ----       | ----         | 1300  |      |
| 76  |   | ----                              | 1100                     | ----                    | ----       | ----         | 1200  |      |
| 79  |   | ----                              | 900                      | ----                    | ----       | ----         | 1100  |      |
| BOOM EXT.<br>OFFSET<br>ANGLE                        |   | 20-FOOT BOOM EXTENSION CAPACITIES |                          |                         |            |              |       |      |
|   |   | MAIN BOOM ANGLE                   |                          |                         |            |              |       |      |
|   |   | 0°                                | 15°                      | 30°                     | 40°        | 50°          | 60°   | 70°  |
|   | 0°  | 2600                              | 2750                     | 3000                    | 3400       | 4100         | 5100  | 6200 |
| 15°   | ----  | 2500                              | 2600                     | 2700                    | 2900       | 3300         | 4300  | 4800 |
| 30°   | ----  | ----                              | 2300                     | 2400                    | 2500       | 2700         | 3200  | 3400 |

# IC-280-A Industrial Crane

LOAD RADIUS IS THE HORIZONTAL DISTANCE FROM THE CENTER OF ROTATION OF THE UNLOADED CRANE TO THE VERTICAL LOAD LINE WITH THE LOAD APPLIED.

LOAD HOOKS, DOWN HAUL WEIGHTS, HOOK BLOCKS, AND OTHER LOAD HANDLING DEVICES EXCEPT HOIST ROPE SHALL BE CONSIDERED PART OF THE LOAD.

CAPACITIES ON OUTRIGGERS OUT AND DOWN ARE 85% OF TIPPING LOADS. CAPACITIES ON IN & DOWN OR MID & DOWN OUTRIGGERS ARE LESS THAN 85% OF TIPPING LOADS. CAPACITIES ON RUBBER ARE 75% OF TIPPING LOADS. CAPACITIES BELOW BOLD LINES ARE LIMITED BY TIPPING. OTHER CAPACITIES ARE LIMITED BY STRUCTURAL OR HYDRAULIC CAPACITY.

PICK AND CARRY WITH THE SHORTEST PRACTICAL BOOM, CENTERED OVER THE FRONT. OPERATE WITH I BOOM AS LOW AS POSSIBLE, WITH THE LOAD CLOSE TO THE GROUND. PICK AND CARRY CAPACITIES ARE FOR SMOOTH, LEVEL PAVED SURFACE. SPEED MUST BE LESS THAN 3 MPH.

DECK CAPACITY 17,000 LBS. WITH EMPTY BOOM RETRACTED OVER FRONT. DECK LOADS MUST BE CENTERED BEHIND FRONT AXLE. SPEED MUST BE LESS THAN 2 MPH. MAXIMUM TRAVEL 200 FT. IN 30 MINUTES ON SMOOTH PAVEMENT.

THE BOOMS ON THIS UNIT ARE ALL STEEL AND HAVE NO LINE VOLTAGE RATING - NO ELECTRICAL INSULATION VALUE.

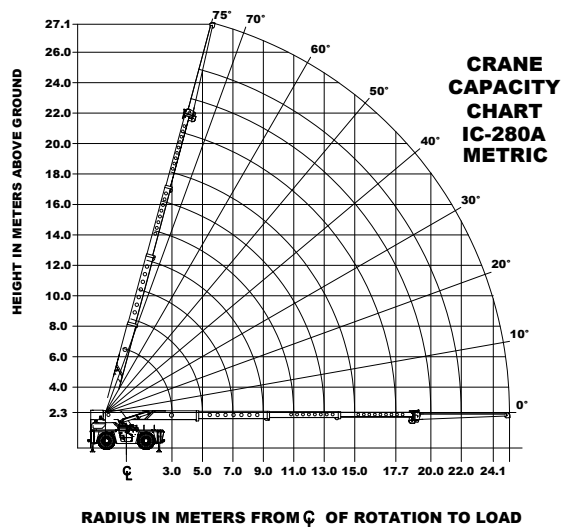
MAXIMUM HYDRAULIC PRESSURE: 3000 PSI BOOM EXTENSION DEDUCT: 500 LBS WHEN STOWED ON BASE BOOM.

[www.BroderSON.com](http://www.BroderSON.com)

© 2024 BroderSON Manufacturing Corp.

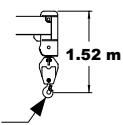
BMC\_plcyPp0o\_0524

## Load Chart Metric

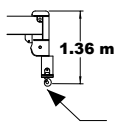


USE FOUR  
PART LINE  
FOR LOADS UP  
TO 18,100 kg

WT 100 kg



FOURTH STAGE TIP



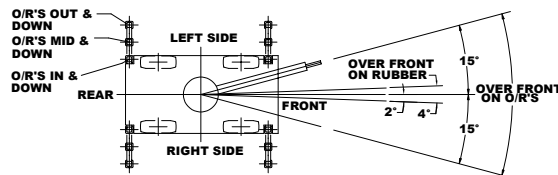
USE SINGLE  
PART LINE  
FOR LOADS UP  
TO 4,500 kg

WT 80 kg

| CAPACITIES APPLY TO OPERATION ON FIRM LEVEL SURFACE |               |                          |                          |                         |            |               |
|---|---------------|--------------------------|--------------------------|-------------------------|------------|---------------|
| MAIN BOOM OR EXTENSION CAPACITIES IN KILOGRAMS      |               |                          |                          |                         |            |               |
| LOAD<br>RADIUS<br>METERS                            | 360° ROTATION |                          |                          |                         | OVER FRONT |               |
|   | ON RUBBER     | OUTRIGGERS<br>OUT & DOWN | OUTRIGGERS<br>MID & DOWN | OUTRIGGERS<br>IN & DOWN | ON RUBBER  | ON OUTRIGGERS |
| 1.8   | 6700          | 18100                    | 18100                    | 18100                   | 6700       | 18100         |
| 2.0   | 6700          | 17200                    | 17200                    | 17200                   | 6700       | 17200         |
| 2.5   | 6600          | 15200                    | 15200                    | 15000                   | 6700       | 15200         |
| 3.0   | 4800          | 13700                    | 13700                    | 9800                    | 6700       | 13700         |
| 3.5   | 3400          | 13000                    | 13000                    | 8000                    | 6700       | 13000         |
| 4.0   | 2900          | 11600                    | 10600                    | 6300                    | 6700       | 11600         |
| 4.5   | 2500          | 10300                    | 8200                     | 4900                    | 6500       | 10300         |
| 5.0   | 1900          | 9300                     | 7000                     | 4100                    | 5000       | 9300          |
| 6.0   | 1400          | 7800                     | 5200                     | 3000                    | 3600       | 7800          |
| 7.0   | 900           | 6400                     | 4000                     | 2200                    | 2900       | 6300          |
| 8.0   | 600           | 5300                     | 3200                     | 1800                    | 2300       | 5300          |
| 9.0   | ---           | 4300                     | 2700                     | 1300                    | 1900       | 4300          |
| 10.0  | ---           | 3700                     | 2200                     | 1100                    | 1500       | 3600          |
| 11.0  | ---           | 3100                     | 1800                     | 800                     | 1200       | 3100          |
| 12.0  | ---           | 2700                     | 1500                     | 700                     | 1000       | 2600          |
| 13.0  | ---           | 2300                     | 1300                     | 400                     | 900        | 2300          |
| 14.0  | ---           | 2000                     | 1100                     | ---                     | 700        | 2000          |
| 15.0  | ---           | 1700                     | 900                      | ---                     | 600        | 1700          |
| 16.0  | ---           | 1500                     | 800                      | ---                     | 500        | 1500          |
| 17.0  | ---           | 1300                     | 600                      | ---                     | ---        | 1400          |
| 17.7  | ---           | 1200                     | 500                      | ---                     | ---        | 1200          |
| 18.0  | ---           | 1200                     | 500                      | ---                     | ---        | 1100          |
| 19.0  | ---           | 1000                     | ---                      | ---                     | ---        | 900           |
| 20.0  | ---           | 900                      | ---                      | ---                     | ---        | 700           |
| 21.0  | ---           | 800                      | ---                      | ---                     | ---        | 600           |
| 22.0  | ---           | 600                      | ---                      | ---                     | ---        | 600           |
| 23.0  | ---           | 500                      | ---                      | ---                     | ---        | 500           |
| 24.1  | ---           | 400                      | ---                      | ---                     | ---        | 500           |

| 6.1 METER BOOM EXTENSION CAPACITIES |                 |      |      |      |      |      |      |      |
|-------------------------------------|-----------------|------|------|------|------|------|------|------|
| BOOM<br>EXT.<br>OFFSET<br>ANGLE     | MAIN BOOM ANGLE |      |      |      |      |      |      |      |
|                                     | 0°              | 15°  | 30°  | 40°  | 50°  | 60°  | 70°  | 75°  |
| 0°                                  | 1200            | 1200 | 1300 | 1500 | 1800 | 2300 | 2800 | 3100 |
| 15°                                 | ---             | 1100 | 1200 | 1200 | 1300 | 1500 | 1900 | 2200 |
| 30°                                 | ---             | ---  | 1000 | 1100 | 1100 | 1200 | 1400 | 1500 |



THE LOAD HOIST LINE ON THIS UNIT MUST BE 14 mm DIA. 114 m LONG 6 X 36 EEPIS WIRE ROPE (OR EQUIVALENT) WITH A MINIMUM BREAKING STRENGTH OF 160 kN.

APPROVED TIRES: 385 / 65 D22.5 16 PLY OTR - 825 kPa

TORQUE WHEEL NUTS TO 680 Nm (THESE CONDITIONS MUST BE MAINTAINED TO HANDLE RATED LOADS ON THIS CRANE.)

## IC-280-A

### Industrial Crane

LOAD RADIUS IS THE HORIZONTAL DISTANCE FROM THE CENTER OF ROTATION OF THE UNLOADED CRANE TO THE VERTICAL LOAD LINE WITH THE LOAD APPLIED.

LOAD HOOKS, DOWN HAUL WEIGHTS, HOOK BLOCKS, AND OTHER LOAD HANDLING DEVICES EXCEPT HOIST ROPE SHALL BE CONSIDERED PART OF THE LOAD.

CAPACITIES ON OUTRIGGERS OUT AND DOWN ARE 85% OF TIPPING LOADS. CAPACITIES ON IN & DOWN OR MID & DOWN OUTRIGGERS ARE LESS THAN 85% OF TIPPING LOADS. CAPACITIES ON RUBBER ARE 75% OF TIPPING LOADS. CAPACITIES BELOW BOLD LINES ARE LIMITED BY TIPPING. OTHER CAPACITIES ARE LIMITED BY STRUCTURAL OR HYDRAULIC CAPACITY.

PICK AND CARRY WITH THE SHORTEST PRACTICAL BOOM, CENTERED OVER THE FRONT. OPERATE WITI-I BOOM AS LOW AS POSSIBLE, WITH THE LOAD CLOSE TO THE GROUND. PICK AND CARRY CAPACITIES ARE FOR SMOOTH, LEVEL PAVED SURFACE. SPEED MUST BE LESS THAN 3 MPH.

DECK CAPACITY 6700 KG WITH EMPTY BOOM RETRACTED OVER FRONT. DECK LOADS MUST BE CENTERED BEHIND FRONT AXLE. SPEED MUST BE LESS THAN 3.2 KPH. MAXIMUM TRAVEL 60 N IN 30 MINUTES ON SMOOTH PAVEMENT.

THE BOOMS ON THIS UNIT ARE ALL STEEL AND HAVE NO LINE VOLTAGE RATING - NO ELECTRICAL INSULATION VALUE.

MAXIMUM HYDRAULIC PRESSURE: 207 BAR  
PSI BOOM EXTENSION DEDUCT: 220 KG  
WHEN STOWED ON BASE BOOM.

[www.Broderon.com](http://www.Broderon.com)

© 2024 Broderon Manufacturing Corp.

BMC\_plcyPp0o\_0524